



CALM, DESIGN-INSPIRED LIVING

CUSTOMER FACT SHEET

KEY FEATURES

- Jumeirah Village Circle, nestled in the heart of Dubai, is a community full of modern townhouses and apartments, within a tranquil village-like setting.
- Offering the perfect space for both families and bachelors, it has access to parks, schools, mosques, nurseries, and sports fields, all spread over 811 hectares.
- With easy access to all the main highways, Jumeirah Village Circle is connected to all the major hotspots in the city, while being away from the traffic.
- The Sloane is a high-rise Miami-inspired tower, reflecting a calm, design-led concept.
- While located at the heart of the city, The Sloane provides you with your own sanctuary and retreat.
- With beach-like colors and sandy textures, the project invites you to forget about everyday life and take a step back to relax.
- The amenities at The Sloane cater to the needs of all residents, providing swimming pools, a fitness centre and pets playground area.

NUMBER OF UNITS PER TYPE

Studio: 27 units

1 bedroom: 89 units

2 bedrooms: 25 units

SIZE RANGE PER UNIT TYPE

Studio: Ranges from 421 sq.ft. to 454 sq.ft.

1 Bedroom: Ranges from 751 sq.ft. to 944 sq.ft.


2 Bedroom: Ranges from 1,200 sq.ft. to 1,268 sq.ft.

LOCATION

 **10 Minutes**
Dubai Autodrome

 **10 Minutes**
Mall of the Emirates

 **10 Minutes**
Dubai Marina

 **15 Minutes**
Downtown Dubai & Burj Khalifa

 **15 Minutes**
Burj Al Arab

 **18 Minutes**
Palm Jumeirah

 **20 Minutes**
Jumeirah Beach

 **28 Minutes**
Dubai World Central

 **30 Minutes**
Dubai International Airport







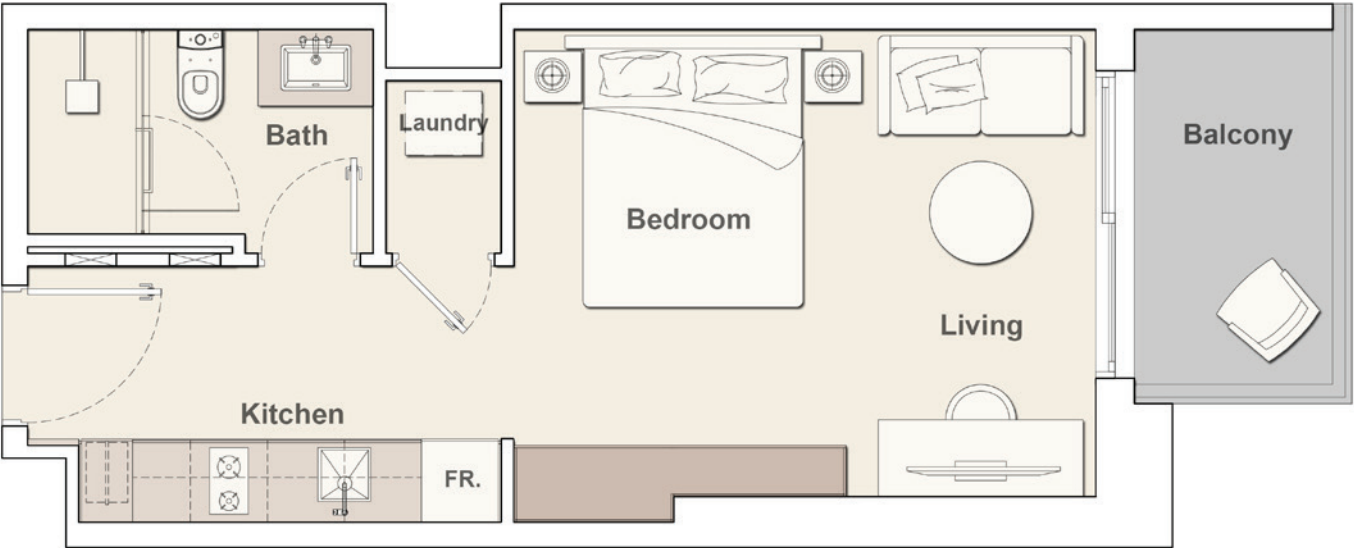




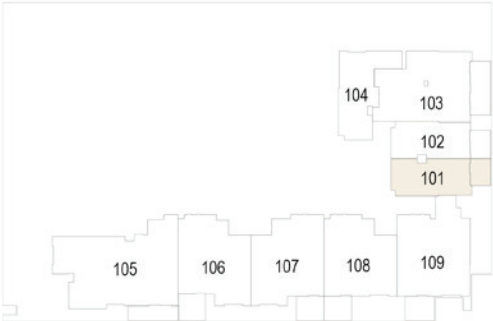
STUDIO TYPE E-1

THE SLOANE

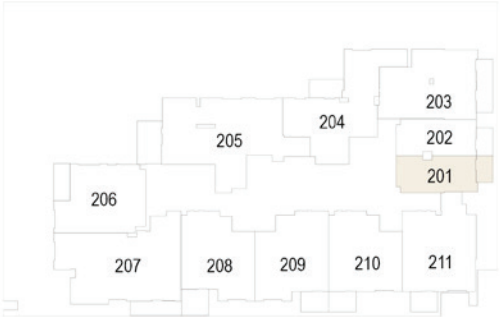
by BELGRAVIA HEIGHTS



1st Floor



2nd - 13th Floor



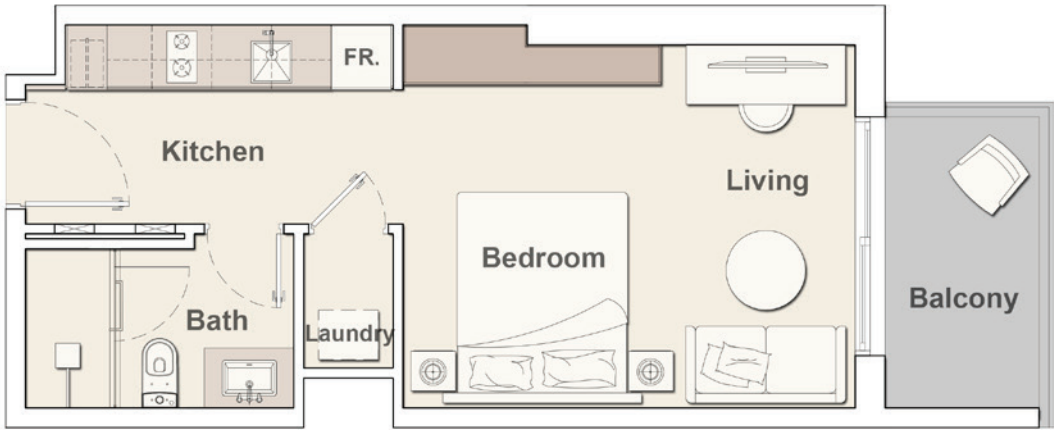
Internal Living Area	363.61 sq.ft.
External Living Area	56.40 sq.ft.
Total Living Area	420.01 sq.ft.

All drawings and dimensions are approximate. Drawings are not to scale and are subject to change without notice. The developer reserves the right to make revisions. The units are measured at typical floor in the building and columns may vary in size depending on the floor level. The furnishings and accessories shown are for representation only. The length and width of the Unit and balcony varies depending on which floor and which orientation the unit is located within the building to comply with the building authority regulations. Apartment unit sizes may vary. Actual unit sizes will be reflected on the Sales and Purchase Agreement.

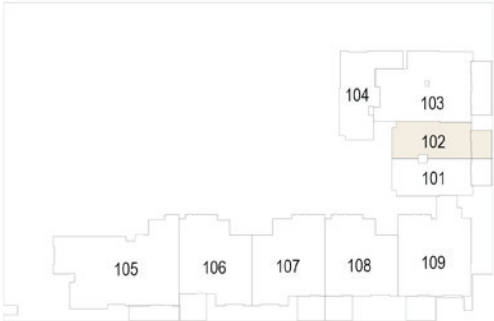
STUDIO TYPE E-2

THE SLOANE

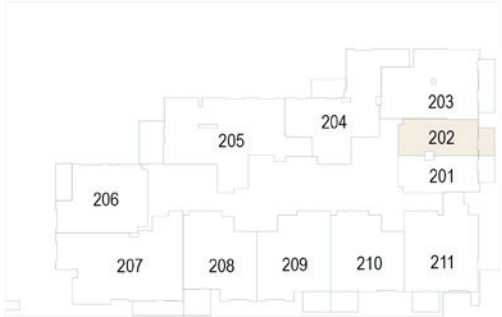
by BELGRAVIA HEIGHTS



1st Floor



2nd - 13th Floor



Internal Living Area	361.88 sq.ft.
External Living Area	59.20 sq.ft.
Total Living Area	421.08 sq.ft.

All drawings and dimensions are approximate. Drawings are not to scale and are subject to change without notice. The developer reserves the right to make revisions. The units are measured at typical floor in the building and columns may vary in size depending on the floor level. The furnishings and accessories shown are for representation only. The length and width of the Unit and balcony varies depending on which floor and which orientation the unit is located within the building to comply with the building authority regulations. Apartment unit sizes may vary. Actual unit sizes will be reflected on the Sales and Purchase Agreement.

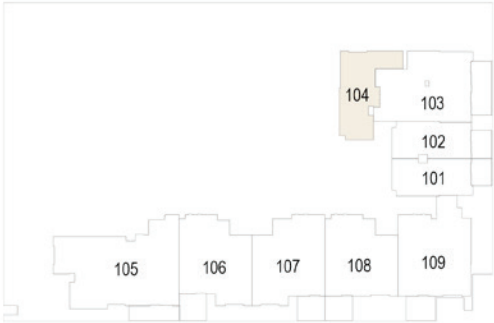
STUDIO TYPE G

THE SLOANE

by BELGRAVIA HEIGHTS



1st Floor



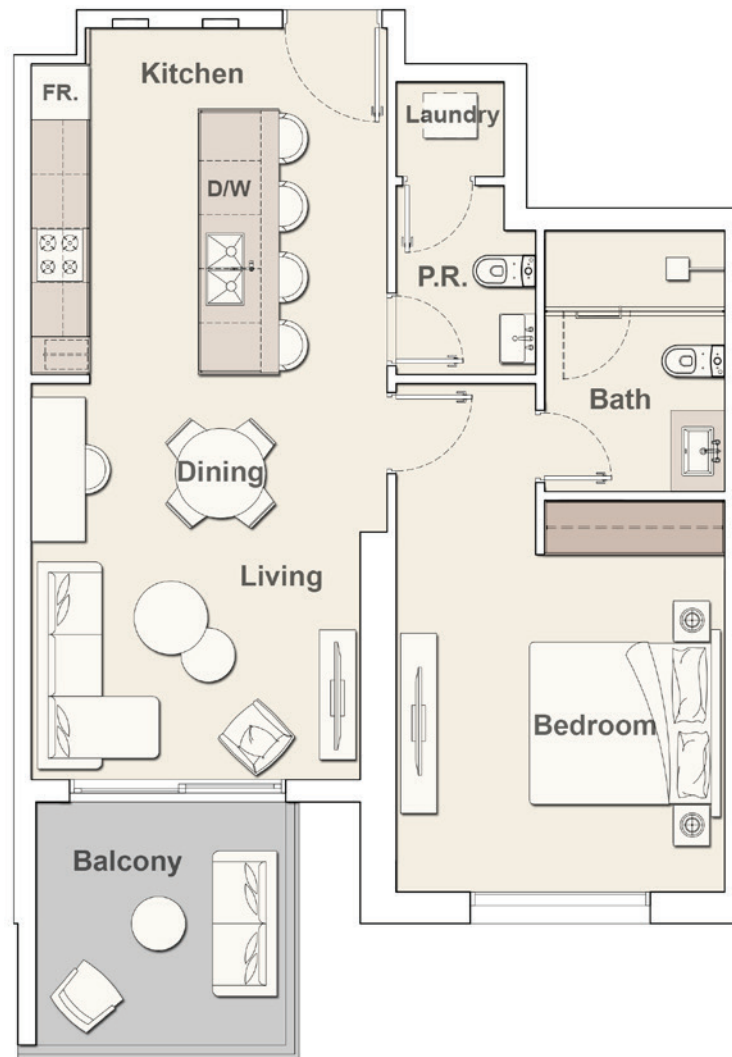
Internal Living Area	454.02 sq.ft.
External Living Area	
Total Living Area	454.02 sq.ft.

All drawings and dimensions are approximate. Drawings are not to scale and are subject to change without notice. The developer reserves the right to make revisions. The units are measured at typical floor in the building and columns may vary in size depending on the floor level. The furnishings and accessories shown are for representation only. The length and width of the Unit and balcony varies depending on which floor and which orientation the unit is located within the building to comply with the building authority regulations. Apartment unit sizes may vary. Actual unit sizes will be reflected on the Sales and Purchase Agreement.

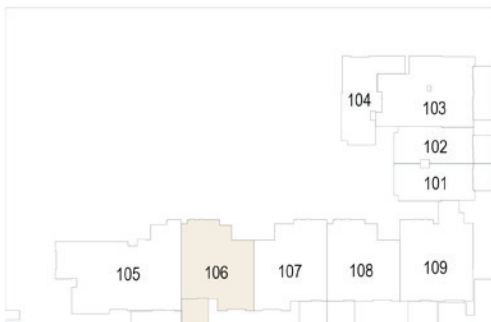
1 BEDROOM TYPE B-1

THE SLOANE

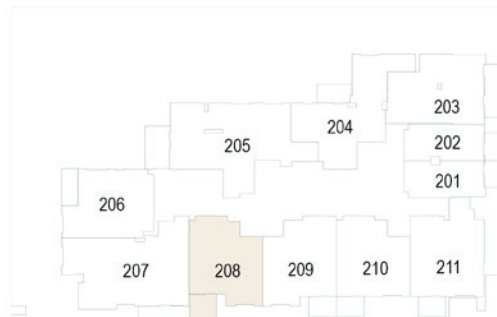
by BELGRAVIA HEIGHTS



1st Floor



2nd - 13th Floor



Internal Living Area 710.96 sq.ft.

External Living Area 91.49 sq.ft.

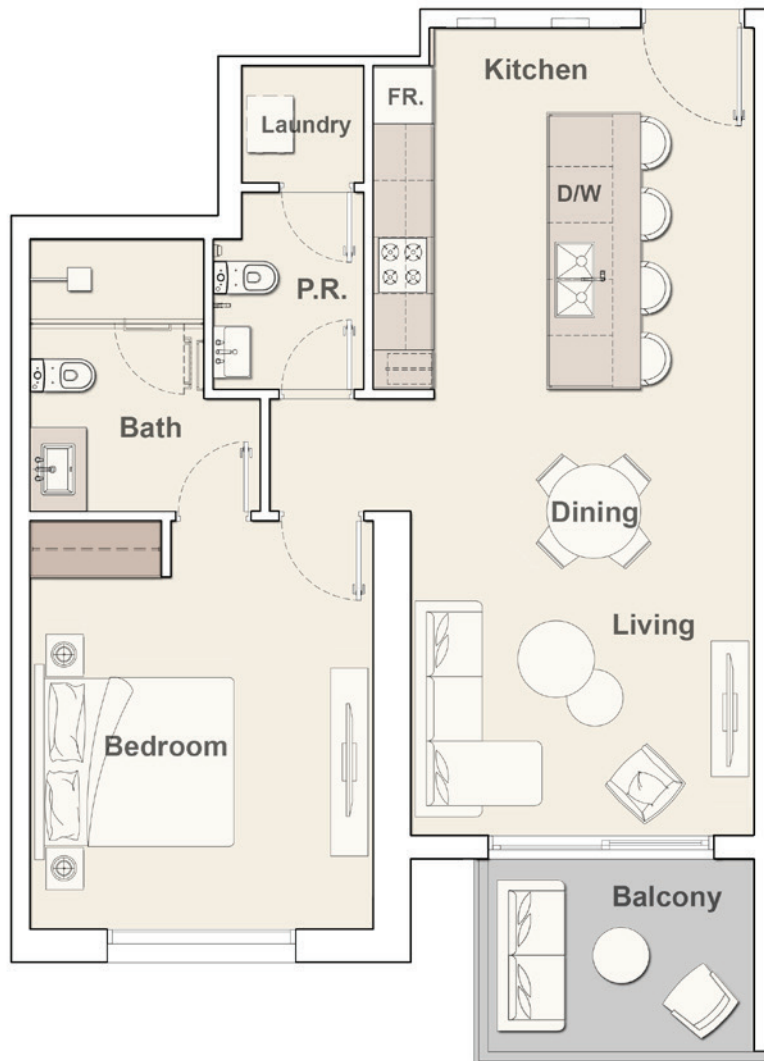
Total Living Area 802.45 sq.ft.

All drawings and dimensions are approximate. Drawings are not to scale and are subject to change without notice. The developer reserves the right to make revisions. The units are measured at typical floor in the building and columns may vary in size depending on the floor level. The furnishings and accessories shown are for representation only. The length and width of the Unit and balcony varies depending on which floor and which orientation the unit is located within the building to comply with the building authority regulations. Apartment unit sizes may vary. Actual unit sizes will be reflected on the Sales and Purchase Agreement.

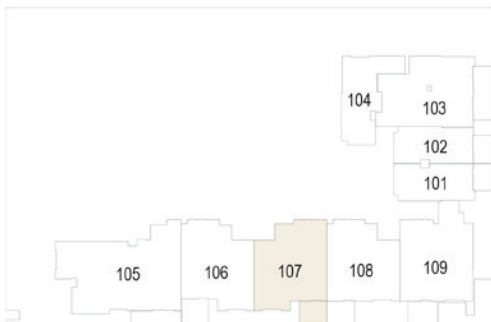
1 BEDROOM TYPE B-2

THE SLOANE

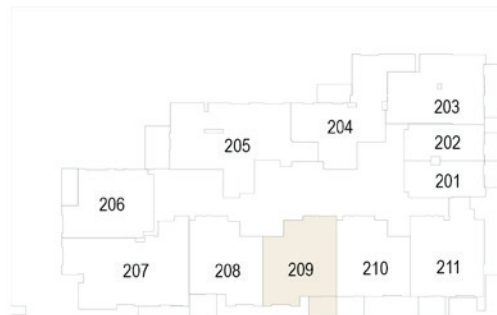
by BELGRAVIA HEIGHTS



1st Floor



2nd - 13th Floor



Internal Living Area 728.07 sq.ft.

External Living Area 71.90 sq.ft.

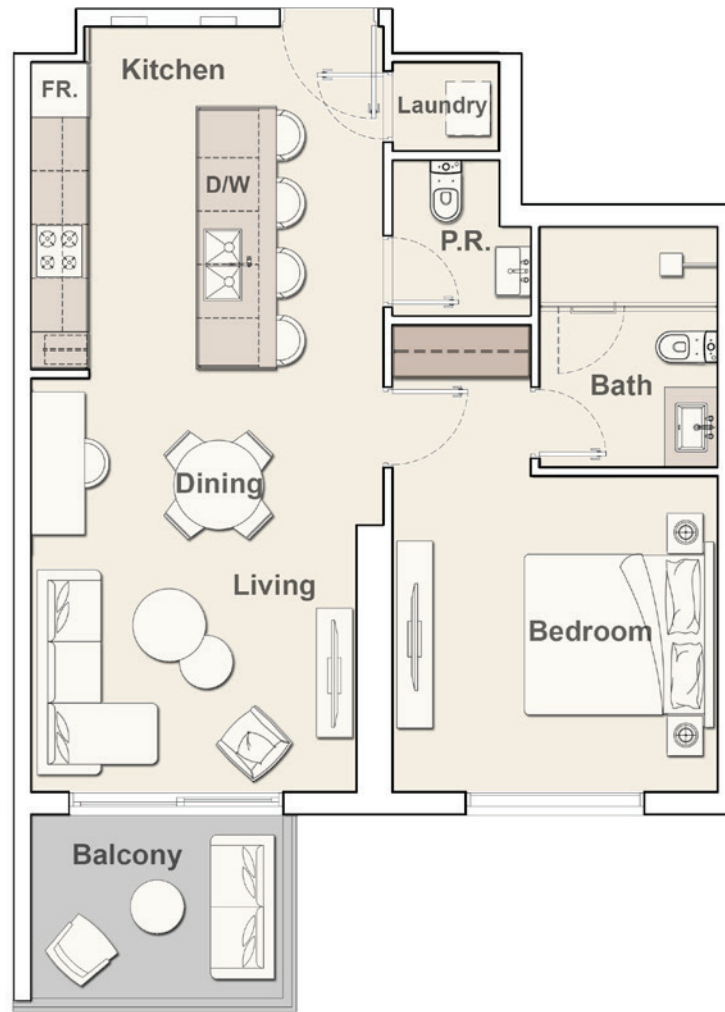
Total Living Area 799.97 sq.ft.

All drawings and dimensions are approximate. Drawings are not to scale and are subject to change without notice. The developer reserves the right to make revisions. The units are measured at typical floor in the building and columns may vary in size depending on the floor level. The furnishings and accessories shown are for representation only. The length and width of the Unit and balcony varies depending on which floor and which orientation the unit is located within the building to comply with the building authority regulations. Apartment unit sizes may vary. Actual unit sizes will be reflected on the Sales and Purchase Agreement.

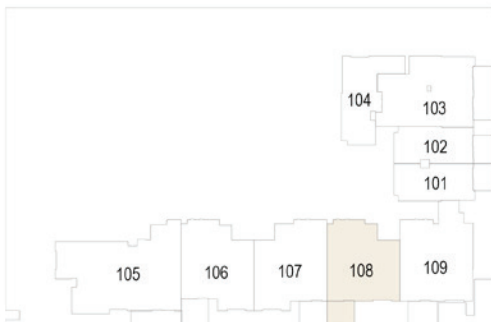
1 BEDROOM TYPE C

THE SLOANE

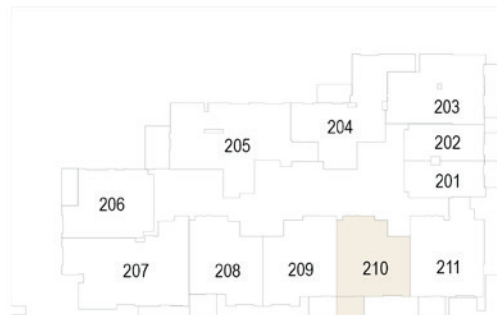
by BELGRAVIA HEIGHTS



1st Floor



2nd - 13th Floor



Internal Living Area 679.96 sq.ft.

External Living Area 71.90 sq.ft.

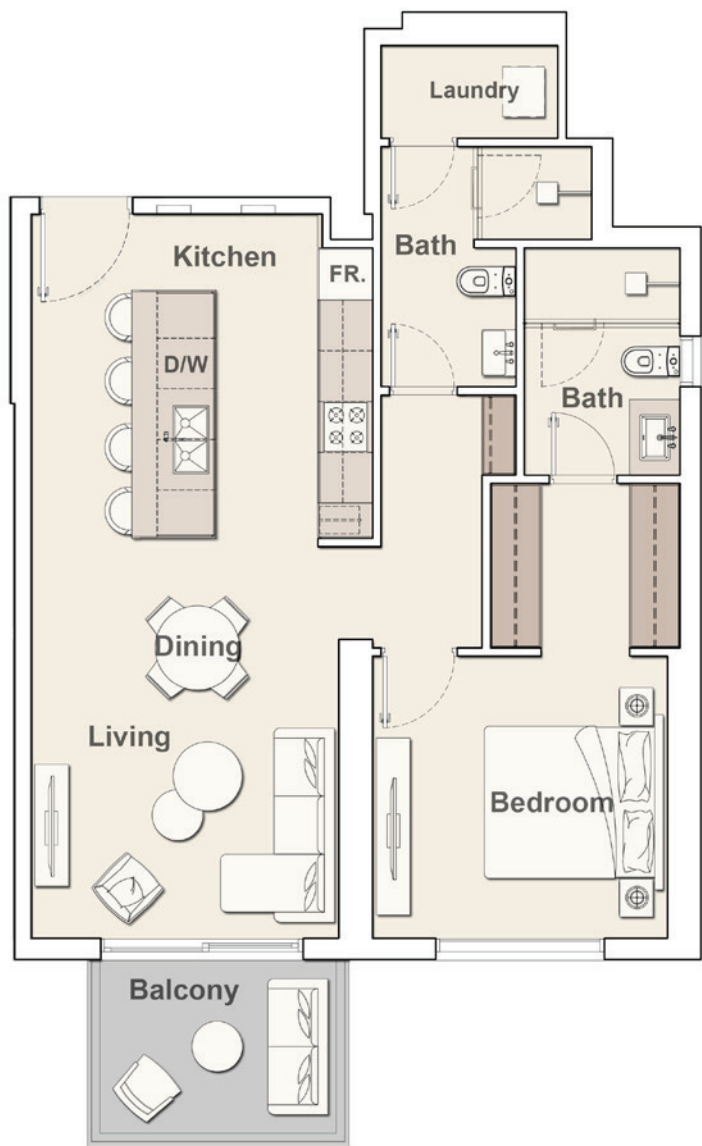
Total Living Area 751.86 sq.ft.

All drawings and dimensions are approximate. Drawings are not to scale and are subject to change without notice. The developer reserves the right to make revisions. The units are measured at typical floor in the building and columns may vary in size depending on the floor level. The furnishings and accessories shown are for representation only. The length and width of the Unit and balcony varies depending on which floor and which orientation the unit is located within the building to comply with the building authority regulations. Apartment unit sizes may vary. Actual unit sizes will be reflected on the Sales and Purchase Agreement.

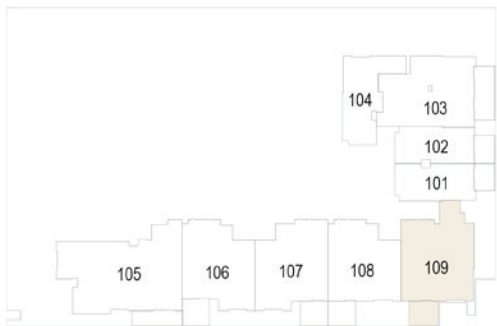
1 BEDROOM TYPE D

THE SLOANE

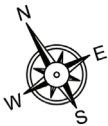
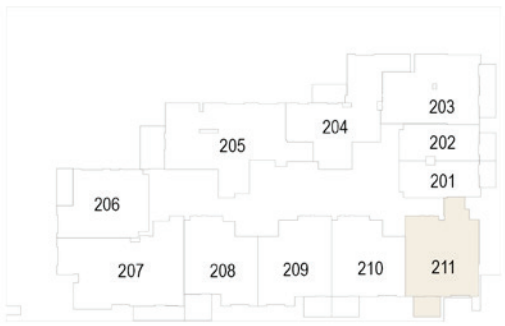
by BELGRAVIA HEIGHTS



1st Floor



2nd - 13th Floor



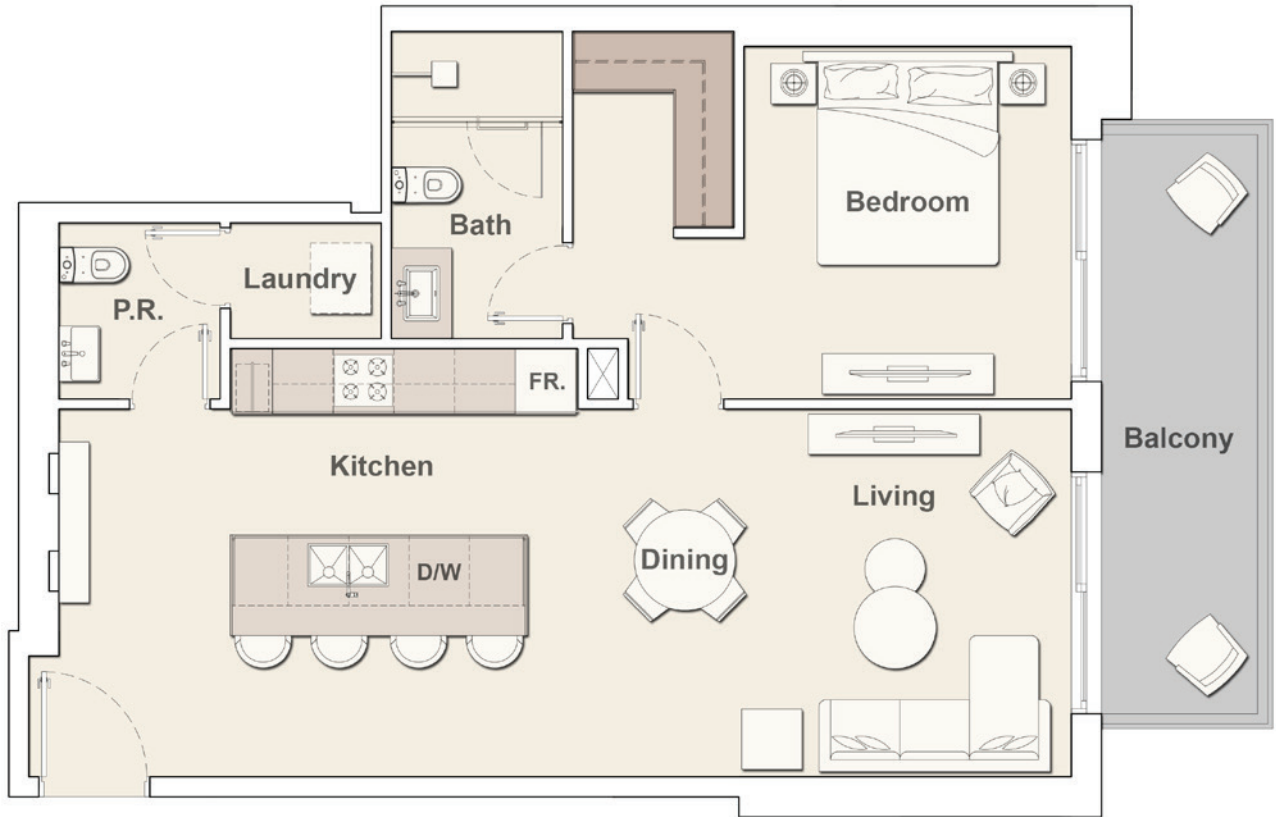
Internal Living Area	795.13 sq.ft.
External Living Area	70.07 sq.ft.
Total Living Area	865.20 sq.ft.

All drawings and dimensions are approximate. Drawings are not to scale and are subject to change without notice. The developer reserves the right to make revisions. The units are measured at typical floor in the building and columns may vary in size depending on the floor level. The furnishings and accessories shown are for representation only. The length and width of the Unit and balcony varies depending on which floor and which orientation the unit is located within the building to comply with the building authority regulations. Apartment unit sizes may vary. Actual unit sizes will be reflected on the Sales and Purchase Agreement.

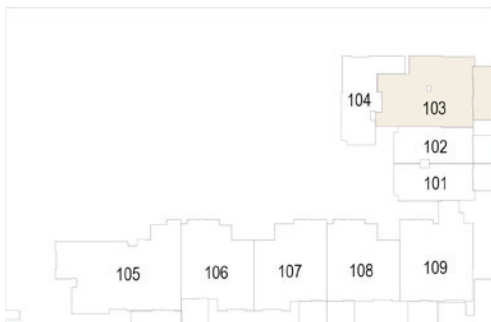
1 BEDROOM TYPE F

THE SLOANE

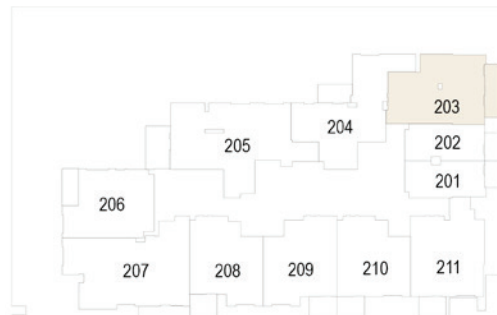
by BELGRAVIA HEIGHTS



1st Floor



2nd - 13th Floor



Internal Living Area 782.97 sq.ft.

External Living Area 112.69 sq.ft.

Total Living Area 895.66 sq.ft.

All drawings and dimensions are approximate. Drawings are not to scale and are subject to change without notice. The developer reserves the right to make revisions. The units are measured at typical floor in the building and columns may vary in size depending on the floor level. The furnishings and accessories shown are for representation only. The length and width of the Unit and balcony varies depending on which floor and which orientation the unit is located within the building to comply with the building authority regulations. Apartment unit sizes may vary. Actual unit sizes will be reflected on the Sales and Purchase Agreement.

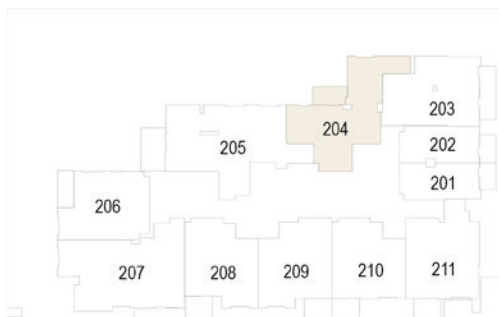
1 BEDROOM TYPE H

THE SLOANE

by BELGRAVIA HEIGHTS



2nd - 13th Floor



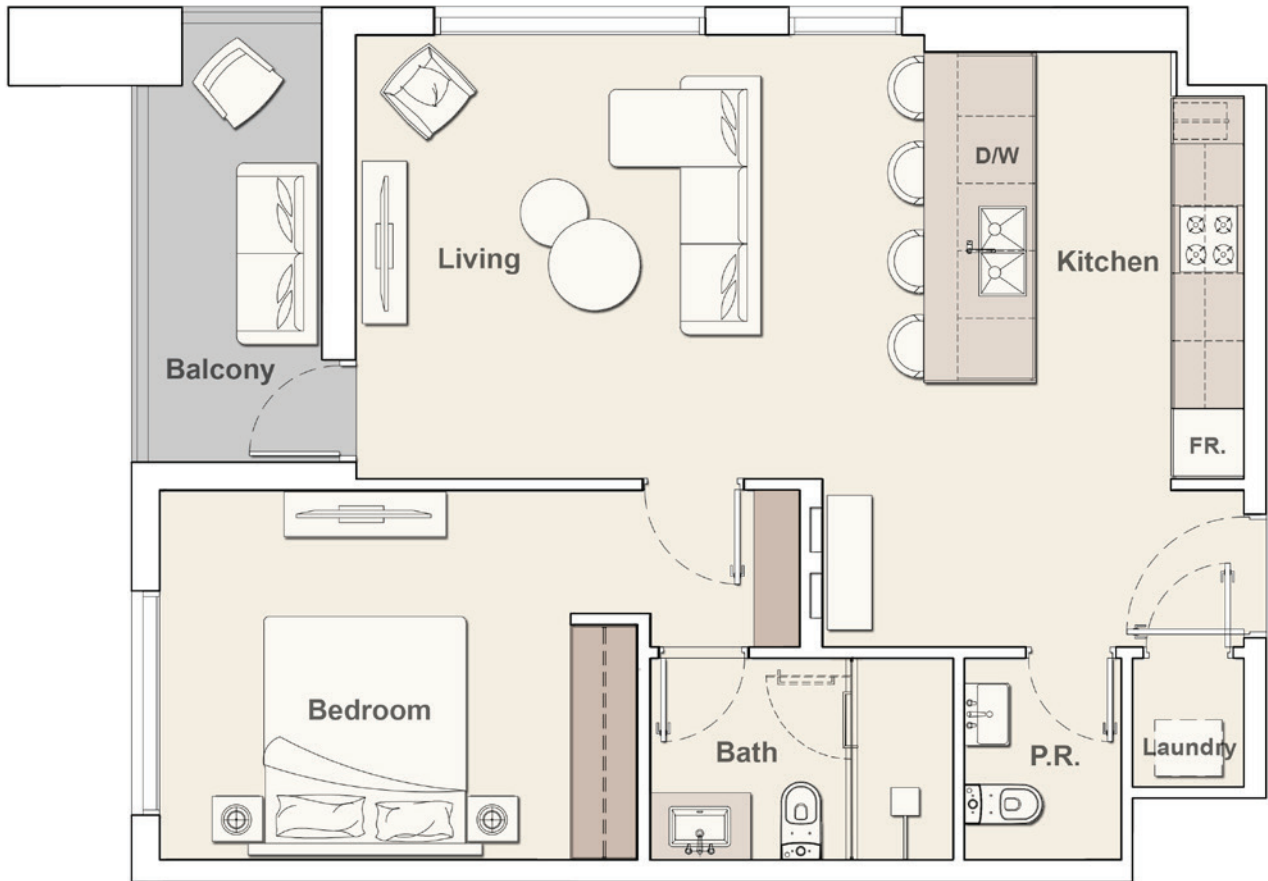
Internal Living Area	864.88 sq.ft.
External Living Area	79.65 sq.ft.
Total Living Area	944.53 sq.ft.

All drawings and dimensions are approximate. Drawings are not to scale and are subject to change without notice. The developer reserves the right to make revisions. The units are measured at typical floor in the building and columns may vary in size depending on the floor level. The furnishings and accessories shown are for representation only. The length and width of the Unit and balcony varies depending on which floor and which orientation the unit is located within the building to comply with the building authority regulations. Apartment unit sizes may vary. Actual unit sizes will be reflected on the Sales and Purchase Agreement.

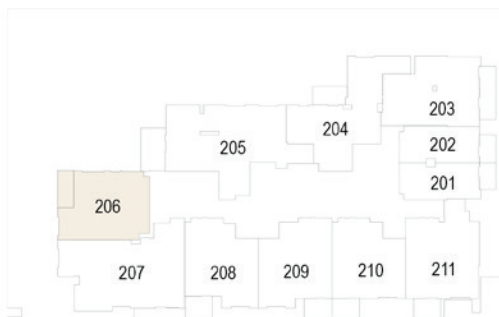
1 BEDROOM TYPE J

THE SLOANE

by BELGRAVIA HEIGHTS



2nd - 13th Floor



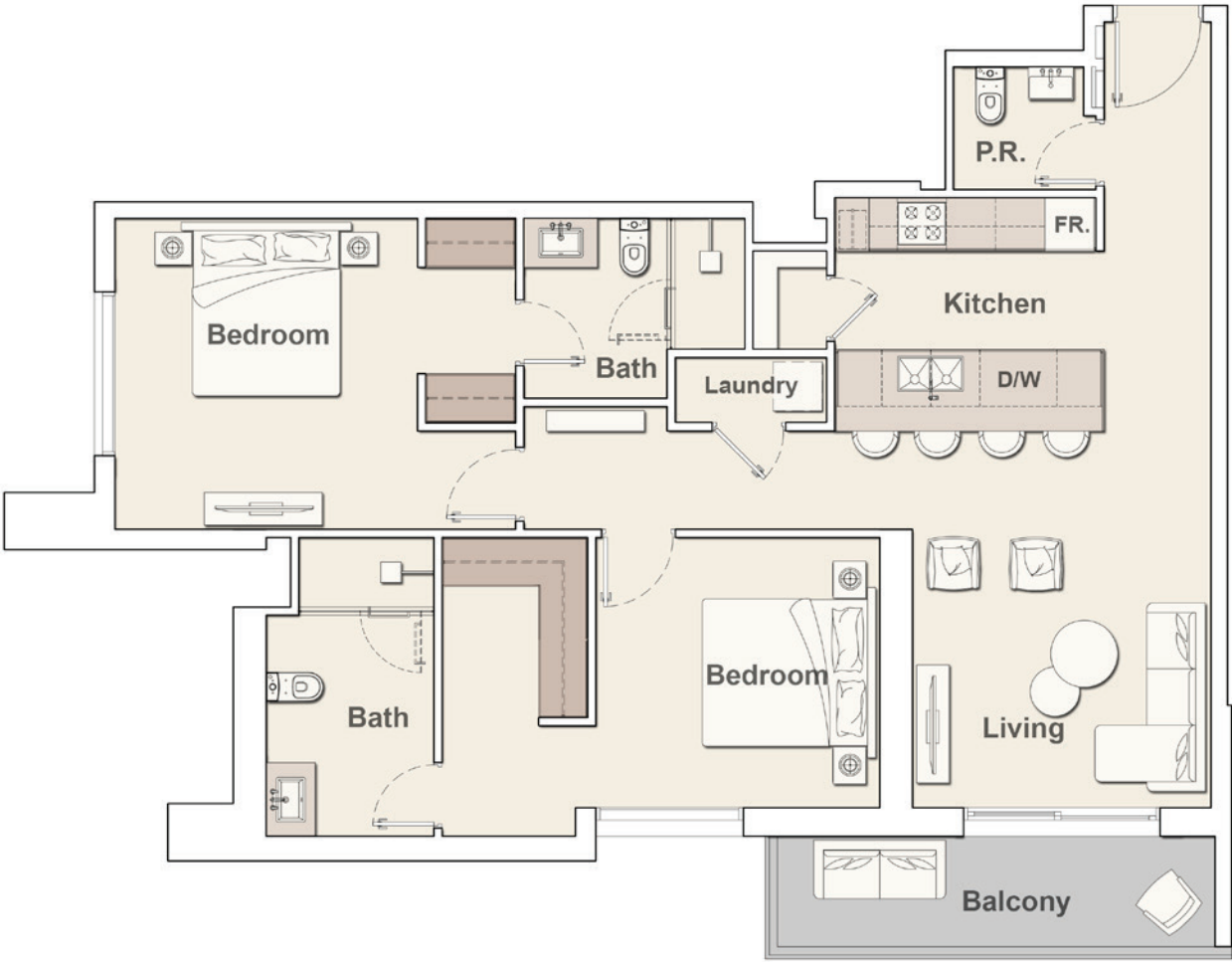
Internal Living Area	708.58 sq.ft.
External Living Area	76.75 sq.ft.
Total Living Area	785.33 sq.ft.

All drawings and dimensions are approximate. Drawings are not to scale and are subject to change without notice. The developer reserves the right to make revisions. The units are measured at typical floor in the building and columns may vary in size depending on the floor level. The furnishings and accessories shown are for representation only. The length and width of the Unit and balcony varies depending on which floor and which orientation the unit is located within the building to comply with the building authority regulations. Apartment unit sizes may vary. Actual unit sizes will be reflected on the Sales and Purchase Agreement.

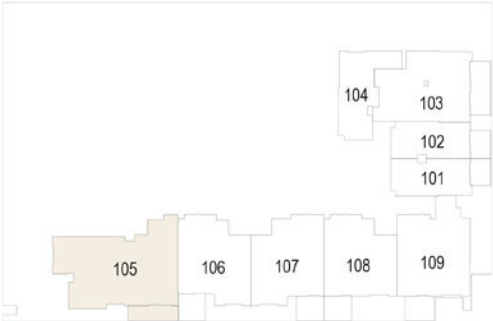
2 BEDROOM TYPE A

THE SLOANE

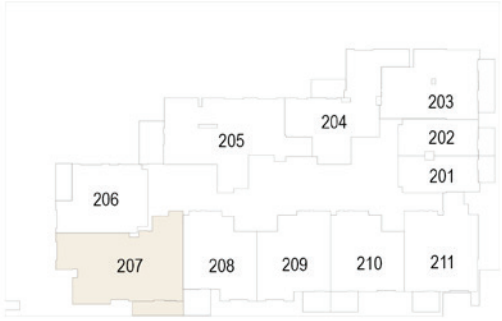
by BELGRAVIA HEIGHTS



1st Floor



2nd - 13th Floor



Internal Living Area	1,105.56 sq.ft.
External Living Area	95.15 sq.ft.
Total Living Area	1,200.71 sq.ft.

All drawings and dimensions are approximate. Drawings are not to scale and are subject to change without notice. The developer reserves the right to make revisions. The units are measured at typical floor in the building and columns may vary in size depending on the floor level. The furnishings and accessories shown are for representation only. The length and width of the Unit and balcony varies depending on which floor and which orientation the unit is located within the building to comply with the building authority regulations. Apartment unit sizes may vary. Actual unit sizes will be reflected on the Sales and Purchase Agreement.

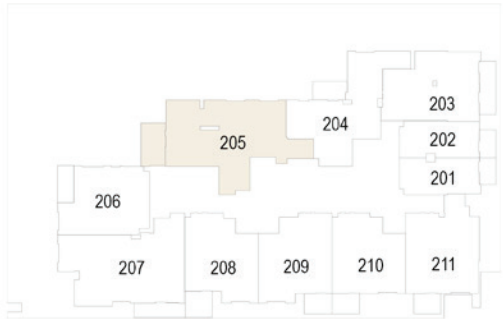
2 BEDROOM TYPE I

THE SLOANE

by BELGRAVIA HEIGHTS



2nd - 13th Floor



Internal Living Area	1,134.19 sq.ft.
External Living Area	134.12 sq.ft.
Total Living Area	1,268.31 sq.ft.

All drawings and dimensions are approximate. Drawings are not to scale and are subject to change without notice. The developer reserves the right to make revisions. The units are measured at typical floor in the building and columns may vary in size depending on the floor level. The furnishings and accessories shown are for representation only. The length and width of the Unit and balcony varies depending on which floor and which orientation the unit is located within the building to comply with the building authority regulations. Apartment unit sizes may vary. Actual unit sizes will be reflected on the Sales and Purchase Agreement.